

青春山海線
ROUTE 2 TAIWAN



走讀礦山 翻閱採金之路

Into the Mines
Reading a Golden Route

2020/03/30-06/28

Gold Museum, New Taipei City Government
1F of Gold Refining Building, Jin-shuei Special Exhibition Hall
Village Corner

指導單位：  文化部  文化部文化資產局  主辦單位： 新北市政府  承辦單位： 新北市政府文化局  新北市立黃金博物館 廣告

新北市立黃金博物館 | 新北市瑞芳區金光路8號 | No.8, Jinguang Rd., Ruifang Dist., New Taipei City 22450, Taiwan | TEL: +886-2-24962800 | www.gep.ntpc.gov.tw

Introduction to the Gold Rush Route

The mining development and the industrial environment of Shuijinjiu area has shaped a unique "Gold Rush Route". This historic gold-mining trail which started from Qidu section of the Keelung River, then extend to Dacukeng, Xiaocukeng, Jiufen, Jinguashi, and Shuinandong of Ruifang District, and finally reached Bachimen Port, has formed a complete development process of mining industry.

The concept of "Cultural Routes" was initiated in Europe in 1987, and was established in 2008 by the "ICOMOS Charter on Cultural Routes" from ICOMOS (International Council on Monuments and Sites), and has since become the basis for the preservation and promotion of cultural heritage in various countries. Cultural Routes refers to the travel paths and their surroundings during the process of cultural activities which reflect specific cultural interactions through tangible or intangible cultural heritage.

Relevant concepts are cited in this exhibition, hoping to highlight the overall value of the "Gold Rush Route" as cultural heritage. Through the illustration and prose works created by local talents, we hope to represent the elapsed scenes and stories on the Gold Rush Route, and provide different perspectives to explore shuijinjiu's gold mining history .

[Industry category]

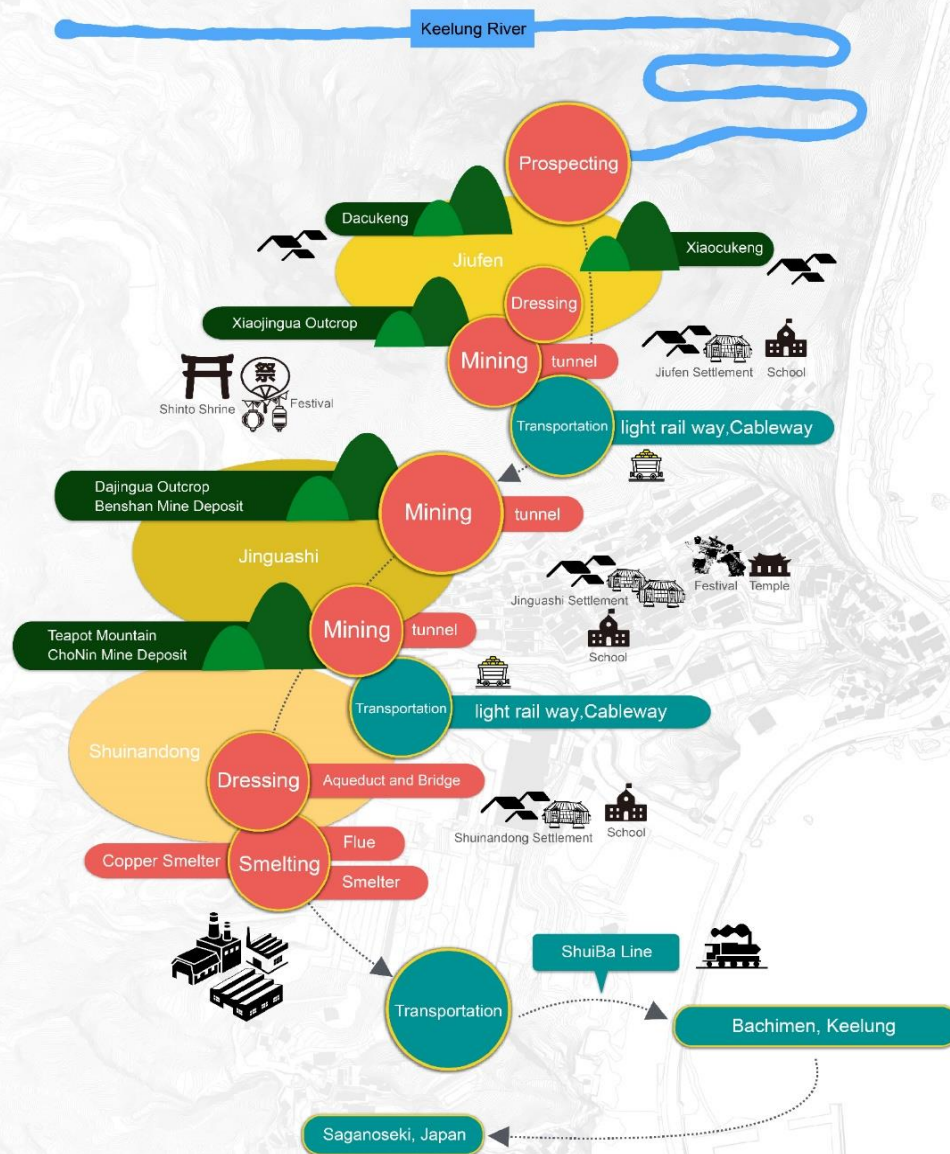
gold and copper

[Geographical distribution]

Ruifang District and Shuangxi District of New Taipei City

[Cultural significance]

- ◎ It is a Nature's classroom full of extraordinary geological features, rock-forming minerals, and diverse flora and fauna.
- ◎ It completes the history of gold and copper mining, and preserves rich tangible and intangible mining heritage.



Gold Rush Route



Legend

- Lively Mountain Town
- Richly Diverse Ecosystem
- Reading / Memories / Scenario
- overlapping

Gold Rush Route-Lively Mountain Town

- 1 Gold Museum
- 2 Zhongshan Hall
- 3 Jiubaokou (the Market)
- 4 Jinguashi Mining Hospital Site
- 5 Jinguashi Qitang Old Street
- 6 Jinguashi Quanji Temple

The most busy and prosperous settlement on the Gold Rush Route is the old Qitang Street, also known as the "Little Ginza". In the heyday of Qitang Old Street, there were numerous shops along both sides of it such as billiard rooms, book rental stores, restaurants, suit shops, cloth shops, shoe shops, grocery stores, bars, etc.. This is the place where miners often hang out around after work, and also the must-visit for local residents to buy daily necessities.

Gold Rush Route-Richly Diverse Ecosystem

- 1 Jiufen Geding
- 2 Shanjian Road Trail
- 3 Aqueduct Bridge
- 4 Jinfu Temple
- 5 Guashan Elementary School
- 6 Guashan Bridge

"Shanjian Trail" on the Gold Rush Route was once the shortcut connecting Jiufen, Jinguashi and Shuinandong. In early days, hawkers from coastal villages often crossed the aqueduct bridge on the trail, climbed up the countless stone stairs, and finally arrived at Jiufen to sell their fishery catches.

Since the mining ceased, no more crowds could be seen here; Instead, various kinds of ferns and relic plants have come back to the evergreen trail.

Reading / Memories / Scenario

- | | | |
|------------------------------|-------------------------------------|-------------------------------------|
| 1 Yun Fat Canteen | 7 The Octagonal Pavilion | 13 The Police Station |
| 2 The Billiard Room | 8 The Open Air Laundry | 14 The Library |
| 3 The Book Rental Shop | 9 Jinguashi Presbyterian Church | 15 Buying Steaming Buns at the Club |
| 4 The Fuzhouer's Barber Shop | 10 Jinguashi Bus Station | 16 The Public Bathhouse |
| 5 Jindefa Grocery Store | 11 The Central Incline Cable System | |
| 6 Jinguashi Catholic Church | 12 The Basketball Game | |

Reading /Memories/ Scenario



Illustrator / Wang Chia-Lan

As a daughter-in-law of Jinguashi who came from a metropolis, Wang Chia-Lan got moved when participating in the project of rediscovering the old trails. Dedicated to artistic creation, she always works on the theme of her life experience in Jinguashi and the features of this mining town.



Author / Lai Shu-Ya

Born and brought up in Jinguashi of Ruifang District, Lai Shu-Ya is now a writer and magazine editor. She has won the China Times Literature Award, Wu Zhuo-Liu Literature and Art Award and Kinmen Literature Award, etc., and also published two books, "Memory Mining" and "A Golden Settlement-the Rise and Fall of Jinguashi".



【Jinguashi Bus Station】

Now and then, I think of the old Jinguashi station in my childhood. From here, I usually took a bus to the market in Ruifang town, or saw off my auntie back to Keelung. The station has stayed on my mind for so long, leaving memorable moments one after another.



【Hawkers carrying shoulder poles】

I still remember the hawkers who came to Jinguashi to sell tofu and churros, and on holidays, they would even sell stinky tofu. They carried groceries or snacks on shoulder-poles and crossed the mountain saddle, peddling all the way.



【 The Black Roofs and Typhoon Stones 】

On typhoons approaching, the villagers would set up the "typhoon stones" to protect houses from being blown away. The adults would put several large stones beside a house, drill holes in the stones, tie ropes to the stones, and then fix the ropes to the roof, while children in the neighborhood still played marbles carefreely in front of the house.



【 Jiubaokou (the Market) 】

In my memory, both sides of Jiubaokou are full of stalls. Apart from the fruit stall on the right, the most impressive one is the pork stall on the opposite. At that time, there was a large population in Jinguashi and you had to wait in line to buy pork. Sometimes you had to pay a deposit before you could buy it.